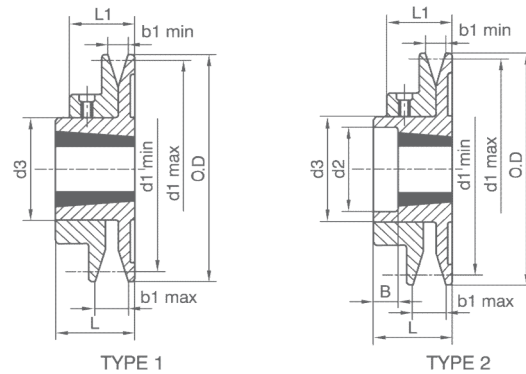


## TB-1

ONE GROOVE ADJUSTABLE SPEED PULLEYS  
WITH TAPER BUSHED BORE

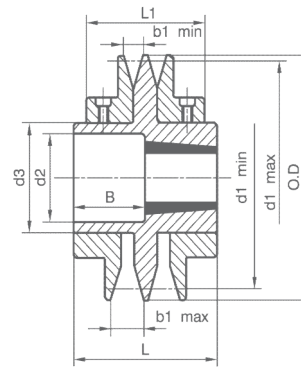


Item	Type	Bush	O.D	L	L1	b1		d1		Set screws	B	d2	d3	
						min	max	min	max					
<b>TB093-1</b>	2	1108	93	36.5	29	13	20.5	60 63	78 85	M6 x 6	13.5	39	50	Z 10 x 6 A13 x 8
<b>TB108-1</b>	1	1215	108	38	30.5	13	20.5	75 78 80 83	92 100 92 100	M6 x 6	-	-	60	Z 10 x 6 A13 x 8 SPZ SPA
<b>TB120-1</b>	1	1215	120	38	30.5	13	20.5	87 90 92 95	104 112 104 112	M6 x 6	-	-	60	Z 10 x 6 A13 x 8 SPZ SPA
<b>TB138-1</b>	1	1615	138	38	30.5	13	20.5	105 108 110 113	122 130 122 130	M6 x 6	-	-	75	Z 10 x 6 A13 x 8 SPZ SPA
<b>TB160-1</b>	2	1615	160	45	35.5	17	26.5	117 120 122 128	138 150 138 150	M8 x 8	6.5	58	75	A13 x 8 B17 x 11 SPA SPB
<b>TB180-1</b>	2	2012	180	45	35.5	17	26.5	137 140 142 148	158 170 158 170	M8 x 8	12.5	71	90	A13 x 8 B17 x 11 SPA SPB
<b>TB200-1</b>	2	2012	200	45	35.5	17	26.5	157 160 162 168	177 190 177 190	M8 x 8	12.5	71	90	A13 x 8 B17 x 11 SPA SPB

Material: Cast iron GG25  
Surface treatment: Phosphating

## TB-2

TWO GROOVES ADJUSTABLE SPEED PULLEYS  
WITH TAPER BUSHED BORE



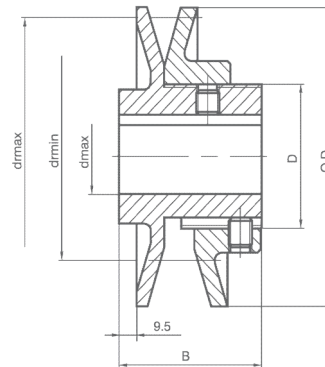
TYPE 3

Item	Type	Bush	O.D	L	L1	b1		d1		Set screws	B	d2	d3	
						min	max	min	max					
TB108-2	3	1215	108	73	58	13	20.5	75	92	M6 x 6	34.5	48.5	60	Z 10 x 6
								78	100					A13 x 8
								80	92					SPZ
								83	100					SPA
TB120-2	3	1215	120	73	58	13	20.5	87	104	M6 x 6	34.5	48.5	60	Z 10 x 6
								90	112					A13 x 8
								92	104					SPZ
								95	112					SPA
TB138-2	3	1615	138	73	58	13	20.5	105	122	M6 x 6	34.5	58.5	75	Z 10 x 6
								108	130					A13 x 8
								110	122					SPZ
								113	130					SPA
TB160-2	3	1615	160	87	68	17	26.5	117	138	M8 x 8	48.5	58.5	75	A13 x 8
								120	150					B17 x 11
								122	138					SPA
								128	150					SPB
TB180-2	3	2012	180	87	68	17	26.5	137	158	M8 x 8	54	71	90	A13 x 8
								140	170					B17 x 11
								142	158					SPA
								148	170					SPB
TB200-2	3	2012	200	87	68	17	26.5	157	177	M8 x 8	54	71	90	A13 x 8
								160	190					B17 x 11
								162	177					SPA
								168	190					SPB

Material: Cast iron GG25  
Surface treatment: Phosphating

## SB-1

ONE GROOVE ADJUSTABLE SPEED PULLEYS  
WITH STOCK BORE  
OR FINISHED BORE WITH KEYWAY

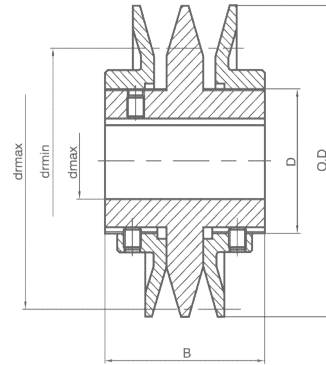


Item	O.D	D	Bore dmax	B	dr		Set screws	
					min	max		
SB083-1	83	40	22	48	58 53	72 72	M6 x 6	SPZ Z 10 x 6
SB093-1	93	45	26	48	65 68 60 63	78 85 78 85	M6 x 6	SPZ SPA Z 10 x 6 A 13 x 8
SB108-1	108	50	28	48	80 83 75 78	93 100 93 100	M6 x 6	SPZ SPA Z 10 x 6 A 13 x 8
SB120-1	120	55	28	48	92 95 87 90	104 112 104 112	M6 x 6	SPZ SPA Z 10 x 6 A 13 x 8
SB138-1	138	55	36	48	110 113 119 115 108 111	122 130 131 122 130 128	M6 x 6	SPZ SPA SPB Z 10 x 6 A 13 x 8 B 17 x 11
SB160-1	160	80	52	53	119 122 128 113 117 120	133 140 150 133 138 150	M8 x 8	SPZ SPA SPB Z 10 x 6 A 13 x 8 B 17 x 11
SB180-1	180	80	52	53	142 148 137 140	160 170 158 170	M8 x 8	SPA SPB A 13 x 8 B 17 x 11

Material: Cast iron GG25  
Surface treatment: Phosphating

## SB-2

**TWO GROOVES ADJUSTABLE SPEED PULLEYS  
WITH STOCK BORE  
OR FINISHED BORE WITH KEYWAY**



Item	O.D	D	Bore dmax	B	dr		Set screws	
					min	max		
<b>SB083-2</b>	83	40	22	76	58 53	72 72	M6 x 6	SPZ Z 10 x 6
<b>SB093-2</b>	93	45	26	76	65 68 60 63	78 85 78 85	M6 x 6	SPZ SPA Z 10 x 6 A 13 x 8
<b>SB108-2</b>	108	50	28	76	80 83 75 78	93 100 93 100	M6 x 6	SPZ SPA Z 10 x 6 A 13 x 8
<b>SB120-2</b>	120	55	28	76	92 95 87 90	104 112 104 112	M6 x 6	SPZ SPA Z 10 x 6 A 13 x 8
<b>SB138-2</b>	138	55	36	76	110 113 119 115 108 111	122 130 131 122 130 128	M6 x 6	SPZ SPA SPB Z 10 x 6 A 13 x 8 B 17 x 11
<b>SB160-2</b>	160	80	52	90	119 122 128 113 117 120	133 140 150 133 138 150	M8 x 8	SPZ SPA SPB Z 10 x 6 A 13 x 8 B 17 x 11
<b>SB180-2</b>	180	80	52	90	142 148 137 140	160 170 158 170	M8 x 8	SPA SPB A 13 x 8 B 17 x 11

Material: Cast iron GG25  
Surface treatment: Phosphating