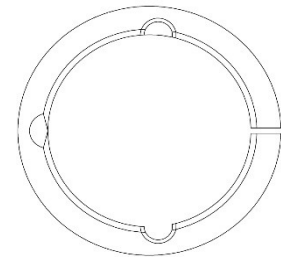
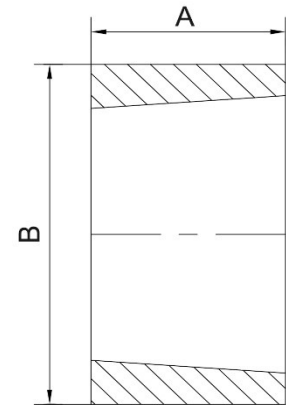


Adaptors for taper bushes are available for use in parallel bored components, thereby eliminating the need to drill, tap and taper bore.

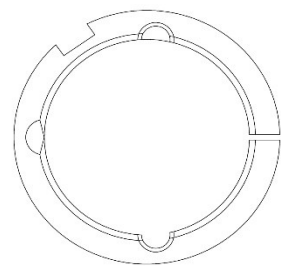
Tightening of the taper bush screws simultaneously contracts the bore of the bush and expands the adaptor in the bore of the hub, resulting in the firmness of a press-fit on all surfaces.

## Adaptors - Taper Bushed

Size	Bush No.	A	B	Key Section
1008PM	1008	22	45	-
1008KM	1008	22	45	5 X 5
1210PM	1210	25	60	-
1210KM	1210	25	60	6 X 6
1610PM	1610	25	70	-
1610KM	1610	25	70	10 X 8
1615PM	1615	38	70	-
1615KM	1615	38	70	10 X 8
2517PM	2517	45	105	-
2517KM	2517	45	105	16 X 10
3030PM	3030	76	130	-
3030KM	3030	76	130	20 X 12
3535PM	3535	89	160	-
3535KM	3535	89	160	22 X 12
4040PM	4040	102	185	-
4040KM	4040	102	185	24 X 12



PM



KM

PM = Plain outside diameter

KM = Keyway on outside diameter allowing additional torque transmission